

# The Student Transitions Project: Lessons Learned from BC Student Mobility Research

1

**Presentation to  
PCCAT 2010 ANNUAL MEETING OF  
THE PAN-CANADIAN CONSORTIUM ON  
ADMISSIONS AND TRANSFER**

**By The Student Transitions Project (STP)  
Joanne Heslop, STP  
Devron Gaber, BCCAT**

**June 25, 2010  
Vancouver, B.C.**

# AGENDA

2

**STP BACKGROUND**

**STUDENT MOBILITY RESEARCH  
& LESSONS LEARNED**

**SECRETS OF OUR SUCCESS**

# STP BACKGROUND

3

**HISTORY**

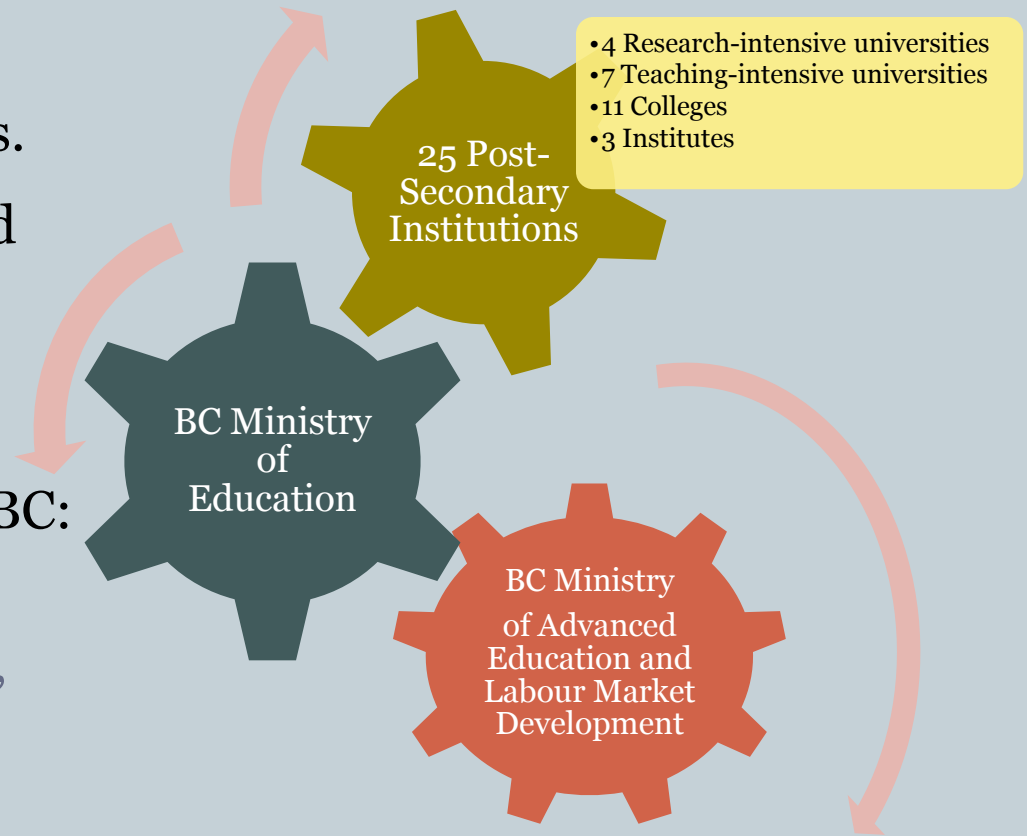
**PURPOSE**

**METHODOLOGY**

# Student Transitions Project (STP)

4

- STP began in 2005.
- Collaborative research effort across BC's Education systems.
- BC Council on Admissions and Transfer (BCCAT) is also a partner in STP research.
- Used for strategic planning at various levels of education in BC:
  - school districts,
  - post-secondary institutions,
  - government.



# STP Purpose

5

- **Purpose** of STP is to collect, analyze, and report on data from the K to 12 and post-secondary systems to answer questions on student mobility.
- **Goal** is to provide **reliable information** at **predictable times** and in a **timely manner** to support institutions and government with planning.
- **Outputs** include numerous reports, newsletters, Excel pivot tables and interactive tools on a variety of topics available on public site and a password-protected website to Registrars and IR directors.

# STP Governance

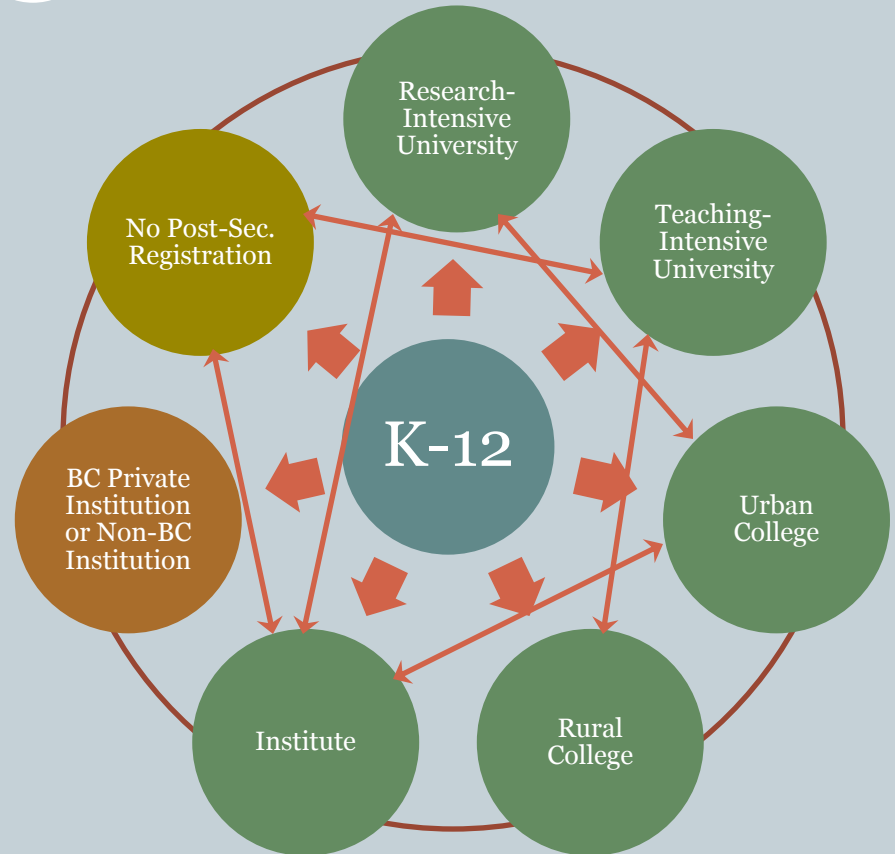
6

- Joanne Heslop is STP Manager, seconded to BCCAT from SFU.
- STP is managed by a Steering Committee with supporting subcommittees:
  - Data Management Subcommittee
  - Applicant Research Subcommittee
  - Mobility of Transfer Students Subcommittee
- Steering Committee includes representatives from both Ministries, post-secondary institutions, and BCCAT.

# Student Transitions and Mobility

7

- STP tracks education transitions and pathways of students:
  - From K-12 to post-secondary,
- AND
- Within the post-secondary system.



Using 2009-10 institution types

# Student Transitions – How?

8

- Personal Education Number (PEN). Without the PEN, there would be no STP.
- All students entering K-12 in BC are assigned a nine-digit number. This unique identifier follows students throughout their education in BC.
- STP links the PEN between the education systems to track student transitions while protecting personal privacy. This is key to our ability to track student movement over time.

**Strong Start**



987321432

**Kindergarten**



987321432

**Grade 12  
Graduate**



987321432

**College**



987321432

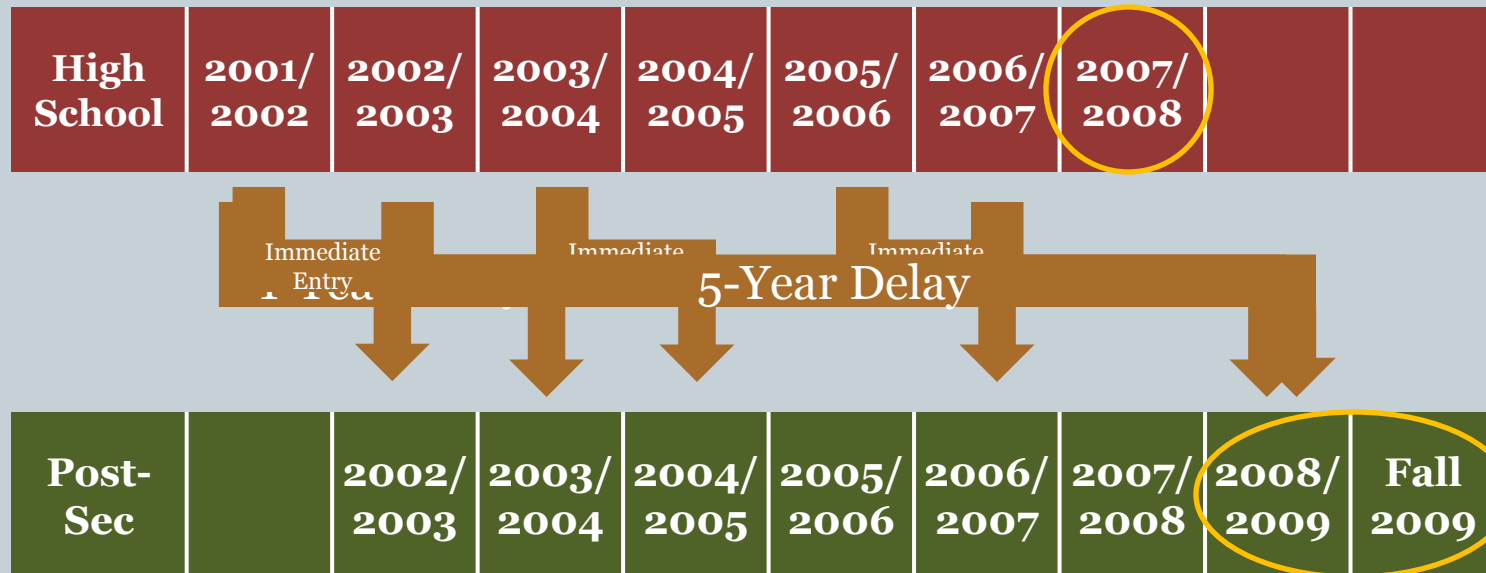
**University**



# Which Students are Included?

11

- High School Graduates of 2001/02 – 2007/08



- First transitions to BC public post-secondary education: 2002/03 – 2008/09

# STP STUDENT MOBILITY RESEARCH FINDINGS & LESSONS LEARNED

# Research Question #1

13

**What proportion of B.C. Grade 12  
Graduates enrol in B.C. public  
post-secondary education  
after graduation?  
When do they enrol?**

# Student Transitions – When?



The majority enroll in Fall (44%)



K-12

**Immediate Entry (51%)**

**1-Year Delay (11%)**

**2-Year Delay (5%)**

**3-Year Delay (3%)**

**4-Year Delay (2%)**

**5-Year Delay (2%)**

**6-Year Delay (1%)**

**7-Yr Cumulative Transition Rate = 75%**

# Lesson #1: Expand Slowly.

15

- Each year, STP adds ...
  - One more cohort of grade 12 graduates,
  - One more year of post-secondary enrollment data,
  - New data elements, as required for new research.
- Focus on BC grade 12 graduates, with a plan for expansion to report annually on transitions of non-graduates and other populations.
- Note: Later in this slideshow, we will expand the focus to all post-secondary registrants, especially those who move between post-secondary institutions.

# Research Question #2

16

**Is there any evidence to suggest  
that participation rates  
in BC public postsecondary  
education are rising,  
at least among the population of  
BC grade 12 graduates?**

# Matrix of First Transitions from BC High School Graduation to BC Public Post-Secondary Education



High School Grad Year		Year of First Entry Into BC Public Post-Secondary Education								Total HS Grads	Cumulative Transition Rate (by 2008/2009)
		2002/ 2003	2003/ 2004	2004/ 2005	2005/ 2006	2006/ 2007	2007 /2008	2008/ 2009	No Trans Yet		
2001/2002	# Grads	22,071	4,983	2,113	1,230	907	690	609	10,759	43,362	Seven Years
	% of Grads	50.9%	11.5%	4.9%	2.8%	2.1%	1.6%	1.4%	24.8%	100.0%	75.2%
2002/2003	# Grads		22,701	4,904	2,145	1,226	966	768	11,621	44,331	Six Years
	% of Grads		51.2%	11.1%	4.8%	2.8%	2.2%	1.7%	26.2%	100.0%	73.8%
2003/2004	# Grads			21,111	4,571	1,554	1,227	1,000	12,446	42,309	Five Years
	% of Grads			49.9%	10.8%	4.6%	2.9%	2.4%	29.4%	100.0%	70.6%
2004/2005	# Grads				21,913	4,754	2,110	1,297	13,584	43,660	Four Years
	% of Grads				50.2%	10.9%	4.8%	3.0%	31.1%	100.0%	68.9%
2005/2006	# Grads					22,853	4,898	2,212	14,912	44,876	Three Years
	% of Grads					50.9%	10.9%	4.9%	33.2%	100.0%	66.8%
2006/2007	# Grads						22,455	4,832	16,103	43,390	Two Years
	% of Grads						51.8%	11.1%	37.1%	100.0%	62.9%
2007/2008	# Grads							23,325	21,347	44,672	One Year
	% of Grads							52.2%	47.8%	100.0%	52.2%

## Lesson #2:

# Use data to dispel myths and support decisions.

18

- The STP is a rich data source and provides evidence to help dispel commonly held myths about post-secondary participation rates in B.C.
- See article, “Debunking Myths: The B.C. Student Transitions Project” in *Education Canada*, Winter 2009.
- The STP has the potential to support more evidence-based decision-making of government and institutions.

# Research Question #3

19

**Among those who do not transition to BC public post-secondary education, are they enrolling elsewhere?**

- **BC Private Institutions?**
- **Non-BC Institutions?**

# Lesson #3:

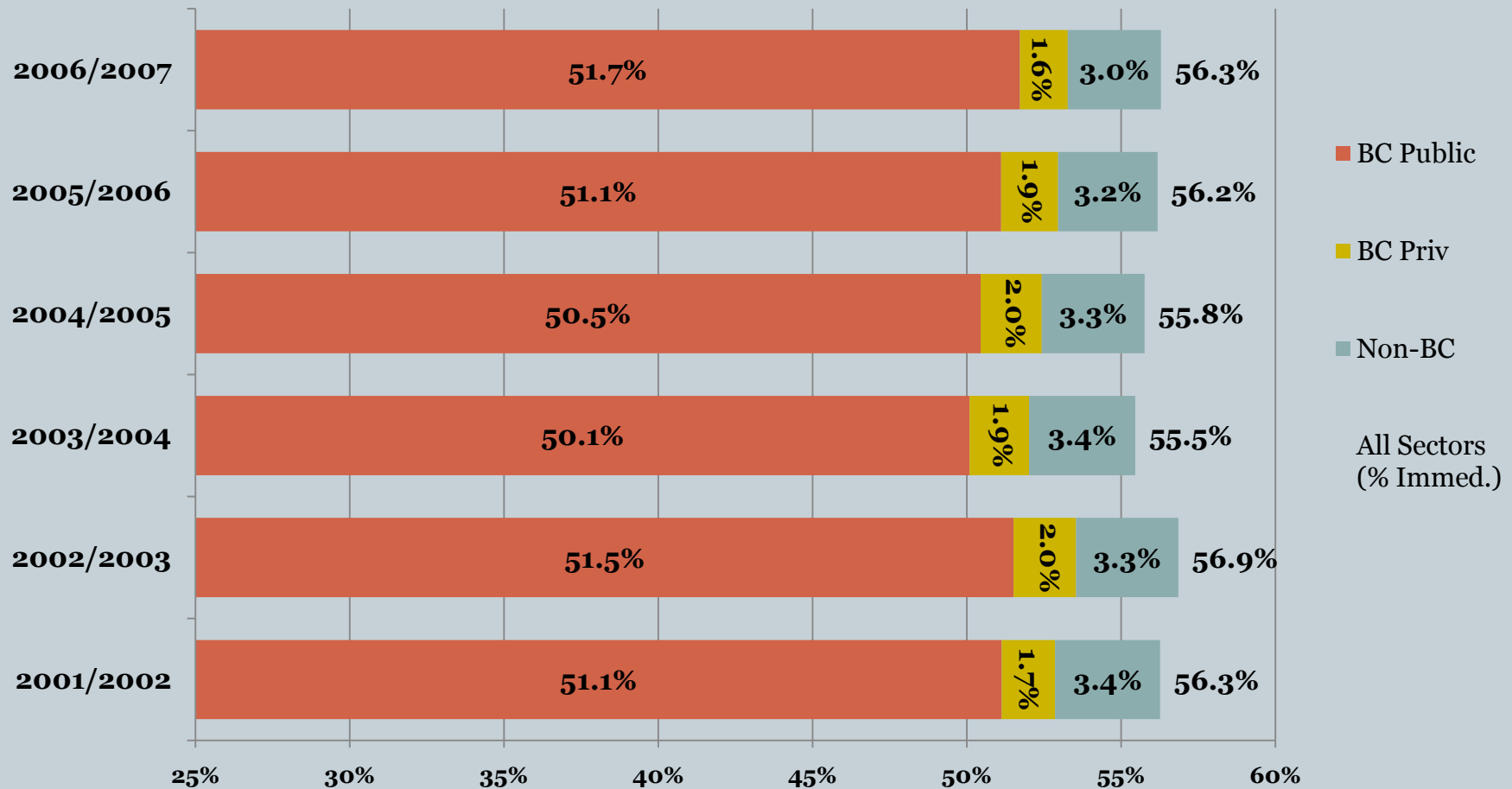
## Tap into other data sources.

20

- Do not limit the research to readily available data.
  - **Are we missing some post-secondary enrollments? Do “non-transitioners” enroll outside of the BC public system? ... YES!**
- The STP linked to two additional data sources to identify post-secondary registrations outside of the BC public system:
  - **Student Financial Aid and**
  - **Passport to Education.**
- The PEN made data linkage possible.

# Immediate-Entry Transition Rates by Graduation Cohort and Sector of First Entry

21



High School Graduation Cohorts, 2001/02 to 2006/07.

# Cumulative Transition Rate (Into All Sectors): Grade 12 Graduates of 2001/02



22

<b>Time of Entry</b>	<b>Transition Rate</b>	<b>Cumulative Transition Rate</b>
Immediate	56.3%	56.3%
1 Year Delay	13.1%	69.4%
2 Year Delay	5.4%	74.8%
3 Year Delay	2.9%	77.6%
4 Year Delay	2.0%	79.6%
5 Year Delay	1.3%	80.9%
<b>6-Year Cumulative Transition Rate</b>	<b>80.9%</b>	

As the time since graduation increases, the rate at which students enroll in post-secondary education declines, but cumulatively the vast majority of grade 12 graduates (81%) enrolled within six years of graduation.

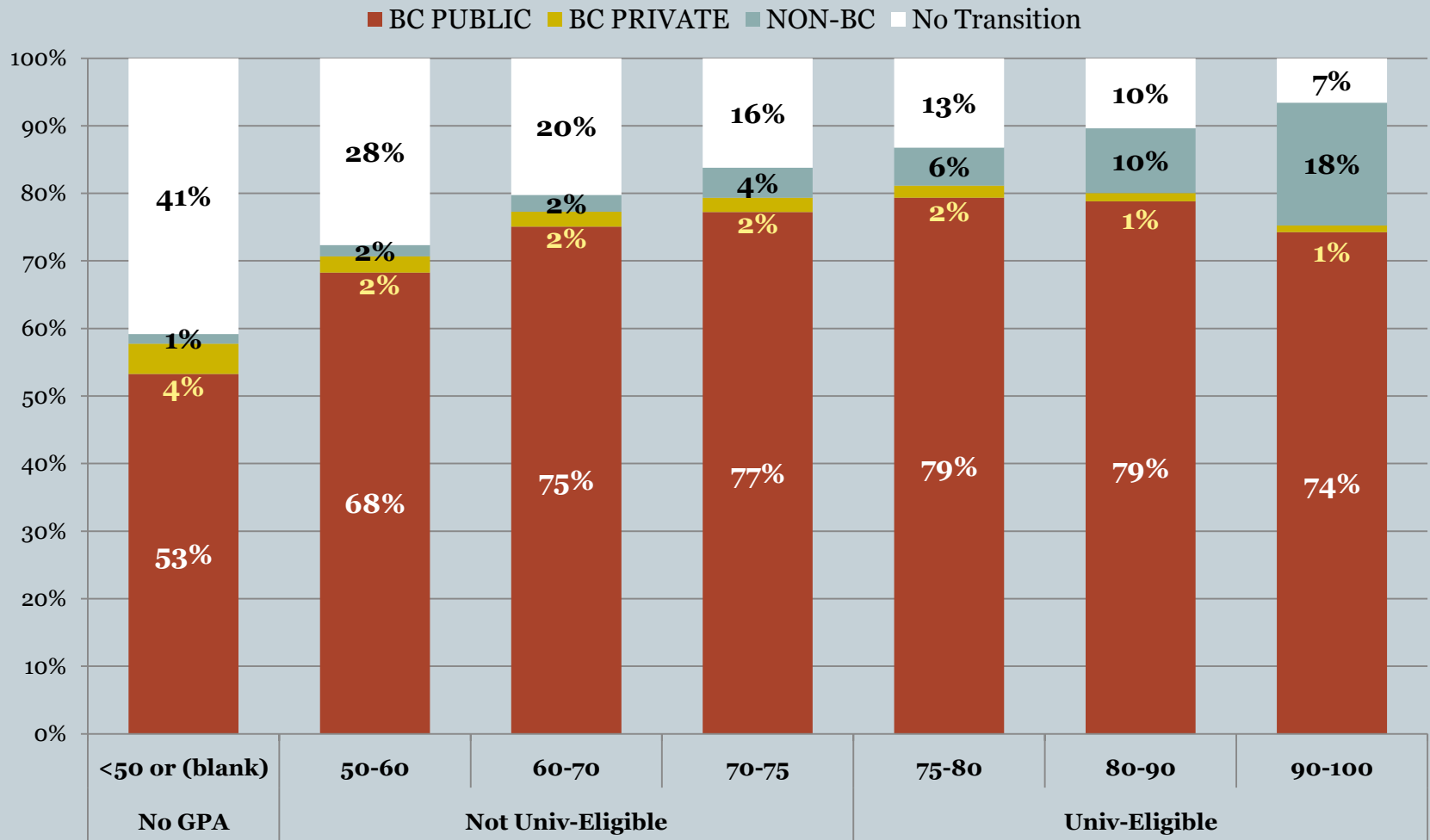
# Research Question #4

23

**Do academic qualifications  
from high school affect  
students' post-secondary  
sector destinations?**

# Sector Destinations by Academic GPA

## (High School Graduation Cohorts 2001/02 to 2006/07)



## Lesson #4: Facts may be interpreted in different ways.

25

- High-achieving B.C. grade 12 graduates are more likely to leave the province for their post-secondary education than students with lower academic qualifications.
- Does this reflect poorly on the BC public post-secondary system, or should we praise the K-12 system and the bright BC graduates for being recruited by out-of province institutions?
- Does the number of lower-achieving students going to private institutions mean lower quality programs or a high level of service for this client group?

# Research Question #5

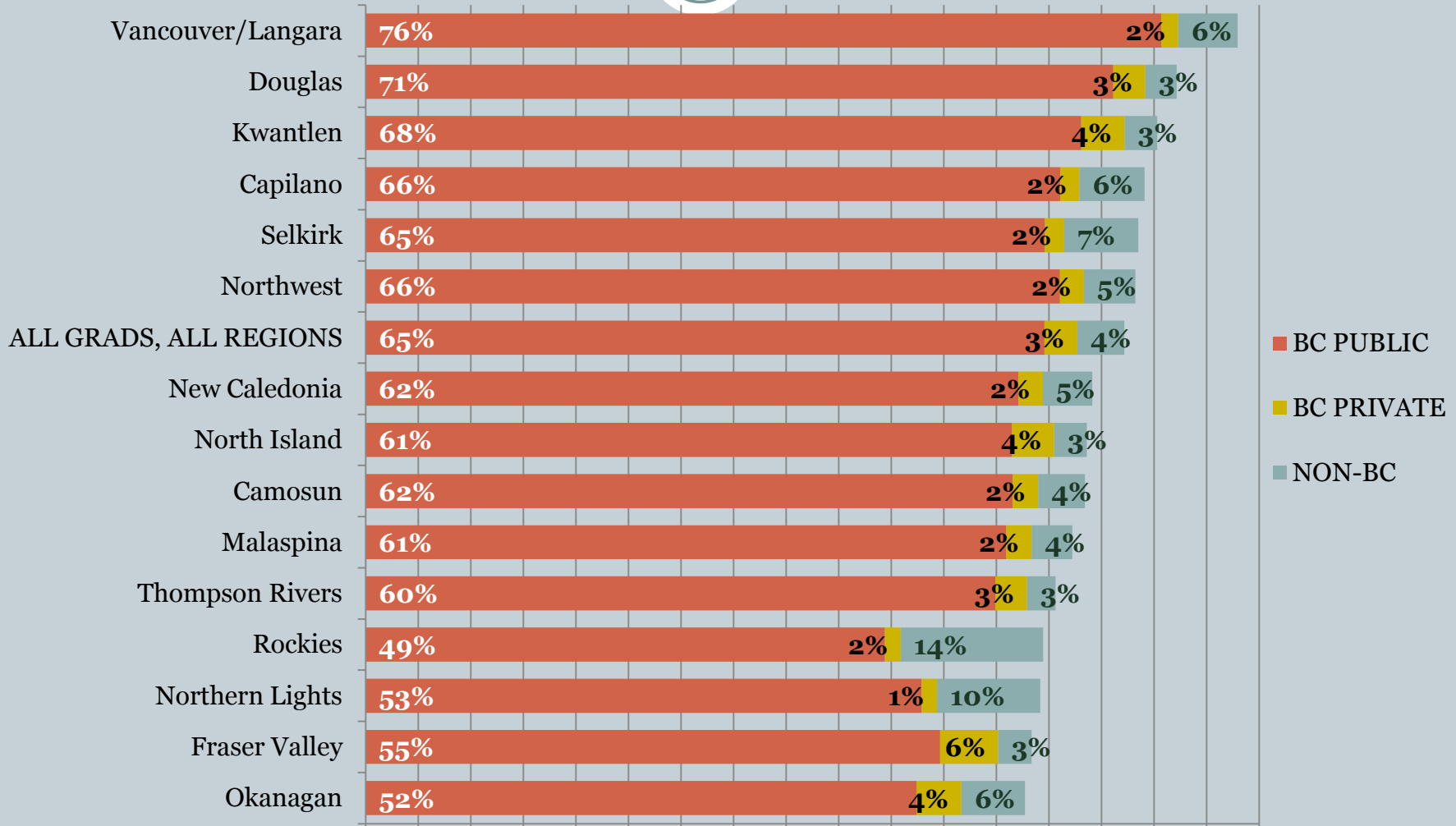
26

What are the regional differences  
in student transition rates?

- **BC Public**
- **BC Private**
- **Non-BC**

# Summary of All Sector Destinations by Region of Grade 12 Grad High School

27



Transition rates (by 2007/08) for high school graduation cohorts, 2001/02 to 2006/07.

## Lesson #5:

# Drill down to find the hidden secrets in the data.

28

- Breaking out the provincial information by region reminds us that each B.C. region has its own unique set of factors affecting student transition rates.
- Province wide statistics are compact and easy to report, but ...
  - Post-secondary institutions prefer regional transition rates,
  - Schools prefer information at the school district or school level.

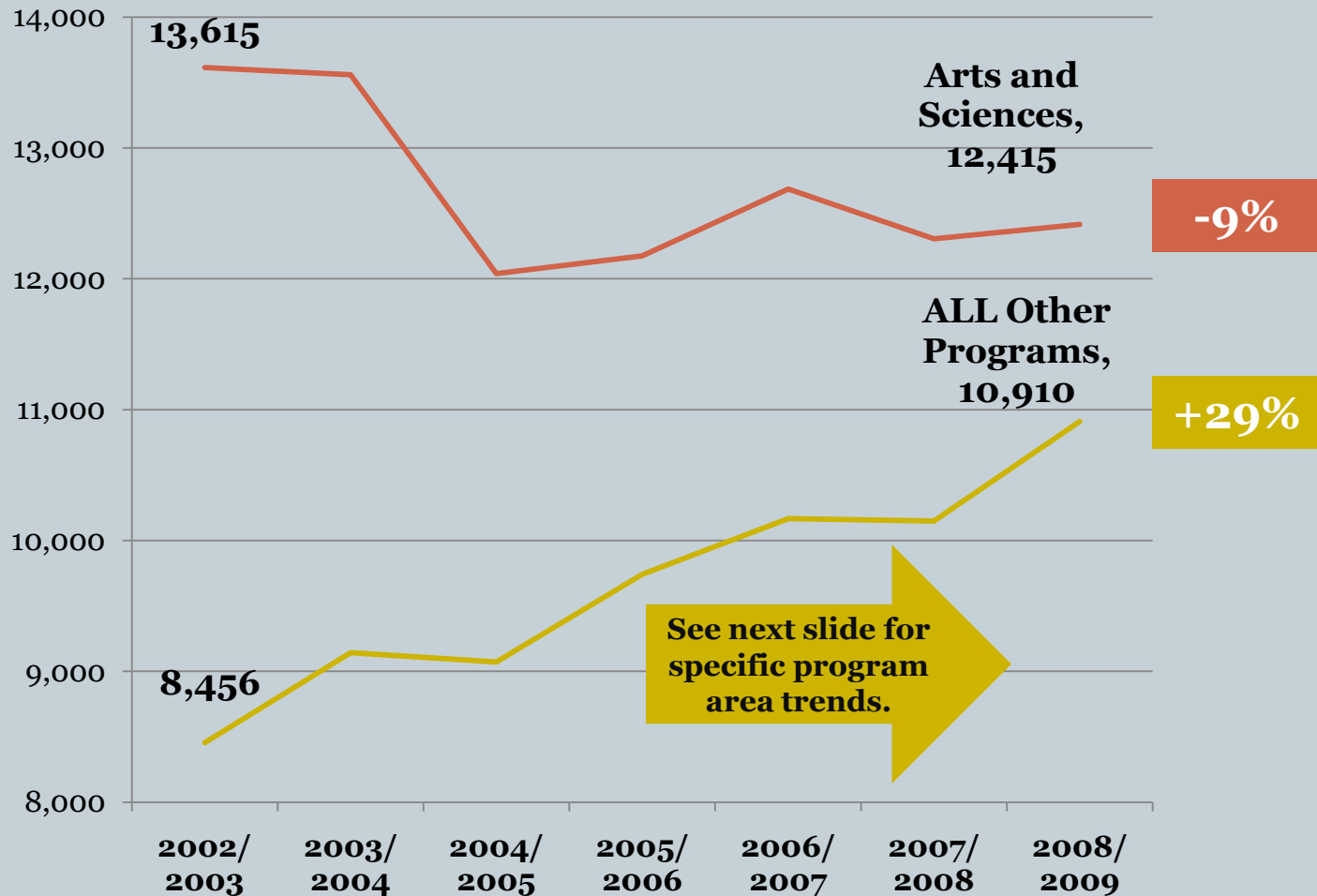
# Research Question #6

29

**What are the Trends in  
Immediate-Entry Program  
Destinations?**

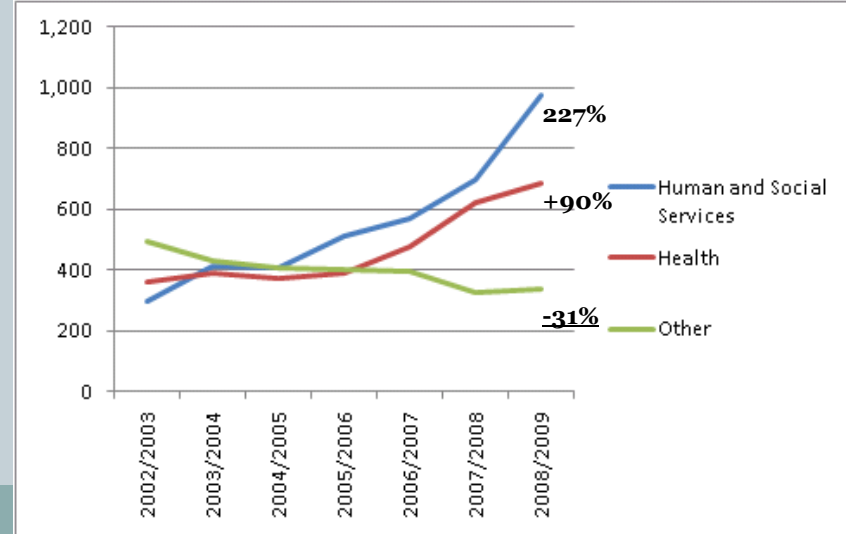
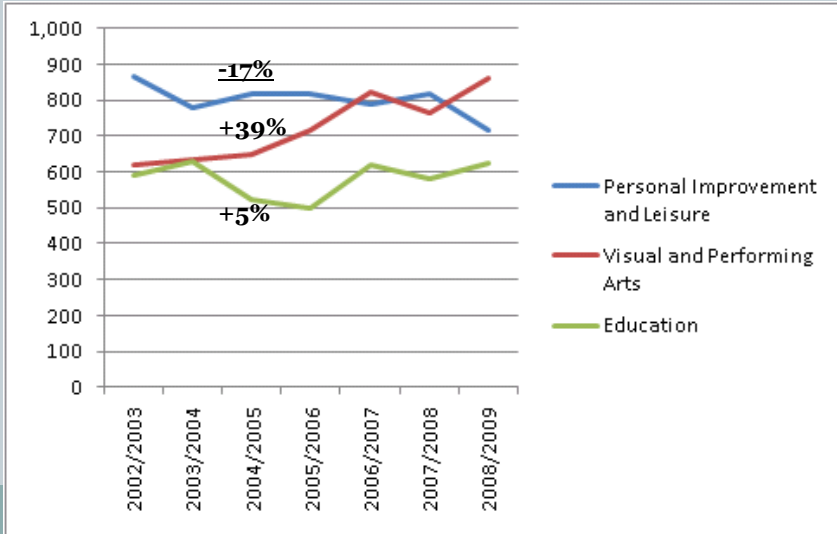
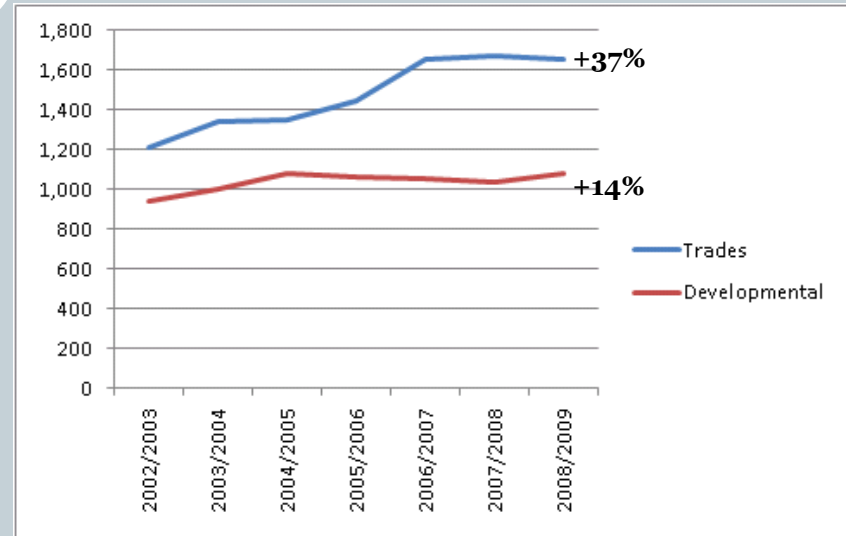
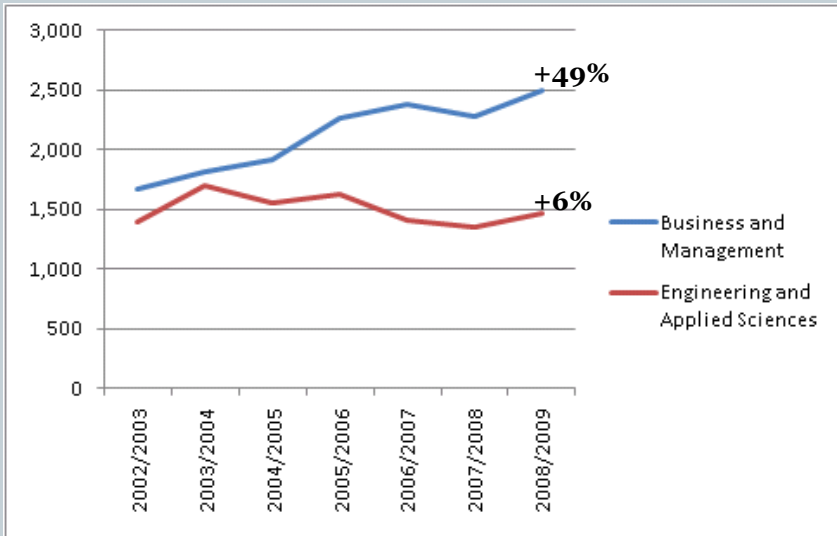
# Immediate-Entry Trends by B.C. Public Post-Sec Program Destination

30



# Immediate-Entry Trends Into “Other” B.C. Public Post-Sec Programs

31



## Lesson #6:

# Use the multi-year dataset for trend analysis.

32

- Trends provide an informative perspective on the present situation.
- Apart from selected myth busting examples, trends reported by the STP are generally consistent with widely held observations and beliefs.

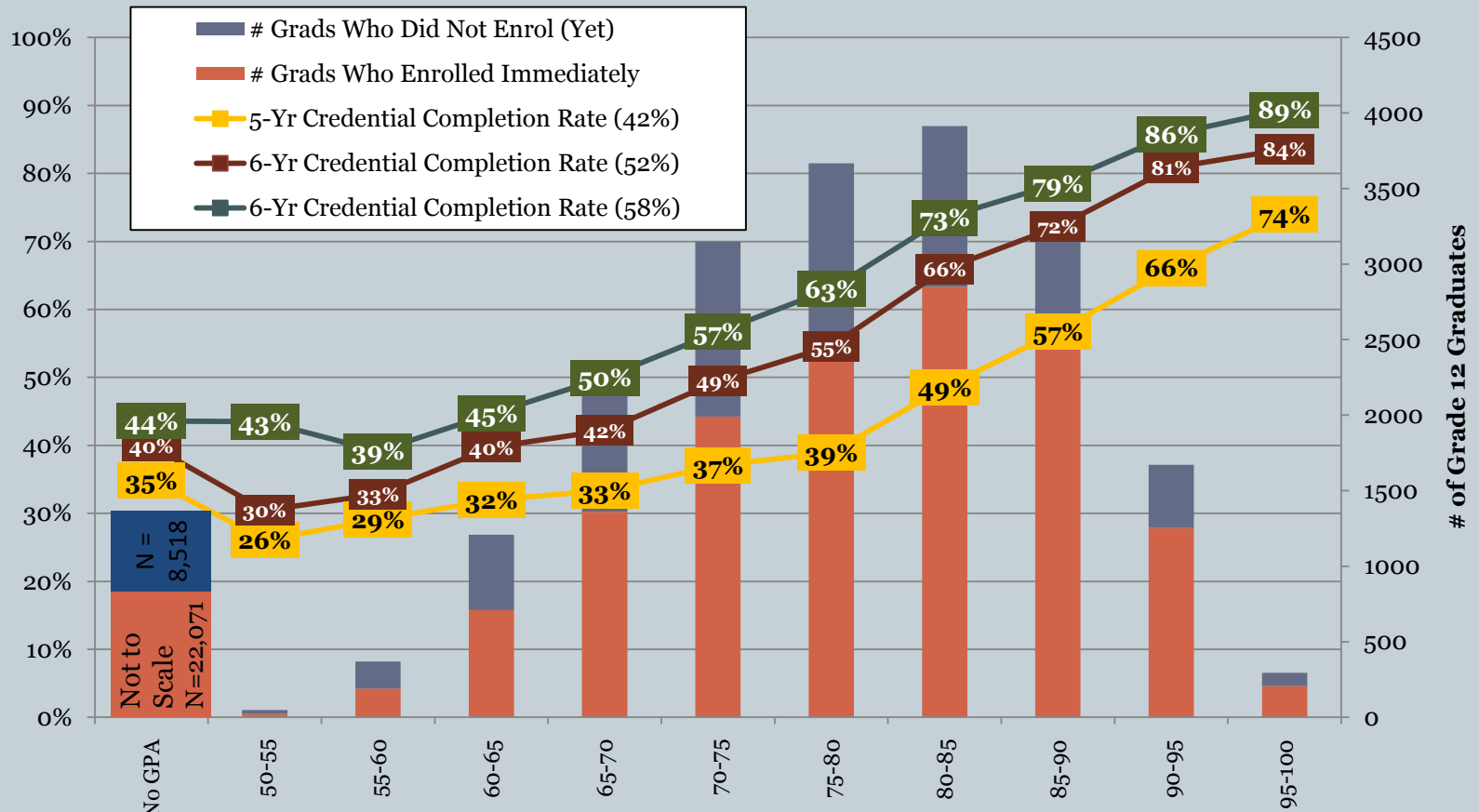
# Research Question #7

33

**What are the credential completion rates of BC high school graduates who enrolled immediately in post-secondary after high school graduation?**

# 5-Yr, 6-Yr and 7-Yr Credential Completion Rates, of the 2001/02 Gr12 Graduation Cohort, by Academic GPA

34



A total of 43,362 students graduated in 2001/02, of which 22,071 enrolled immediately. Credential completion rate is calculated for these immediate-entry students only as the number of unique completers divided by the number of unique immediate-entry students.

## Lesson #7:

# Longitudinal datasets are useful ...with limitations.

35

- The STP can now report on “time to completion” and 5-year, 6-year and 7-year credential completion rates of immediate-entry students.
- But, the STP cannot calculate “time to credential completion” for students who began post-secondary studies before STP’s first data collection in 2002/03.

# Research Question #8

36

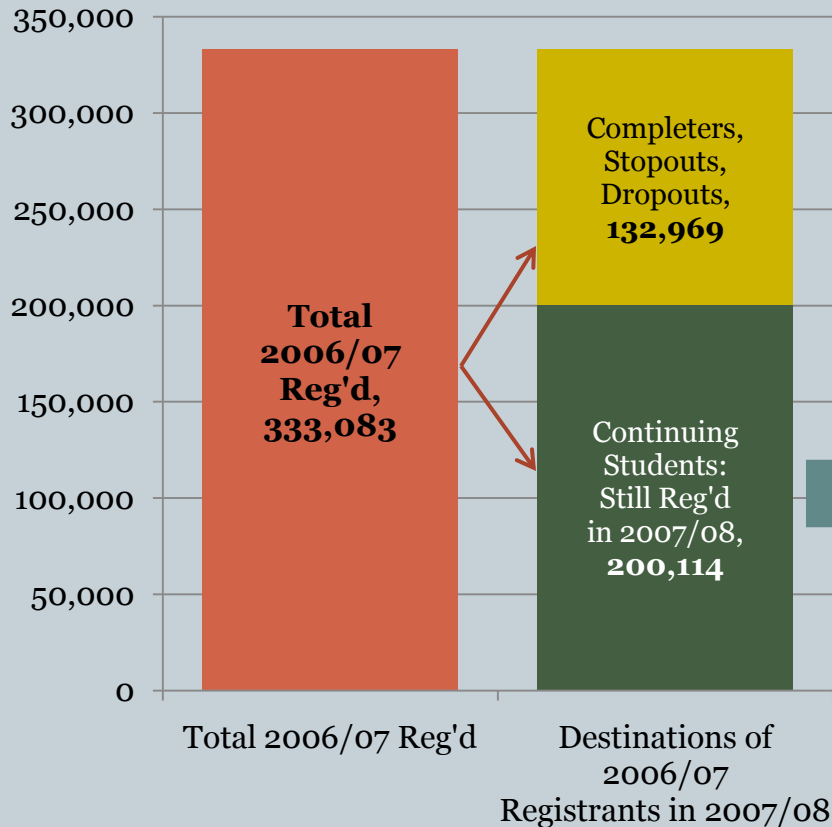
**To what extent do BC public post-secondary registrants move between institutions?**

**How many students attend more than one institution over a five year period?**

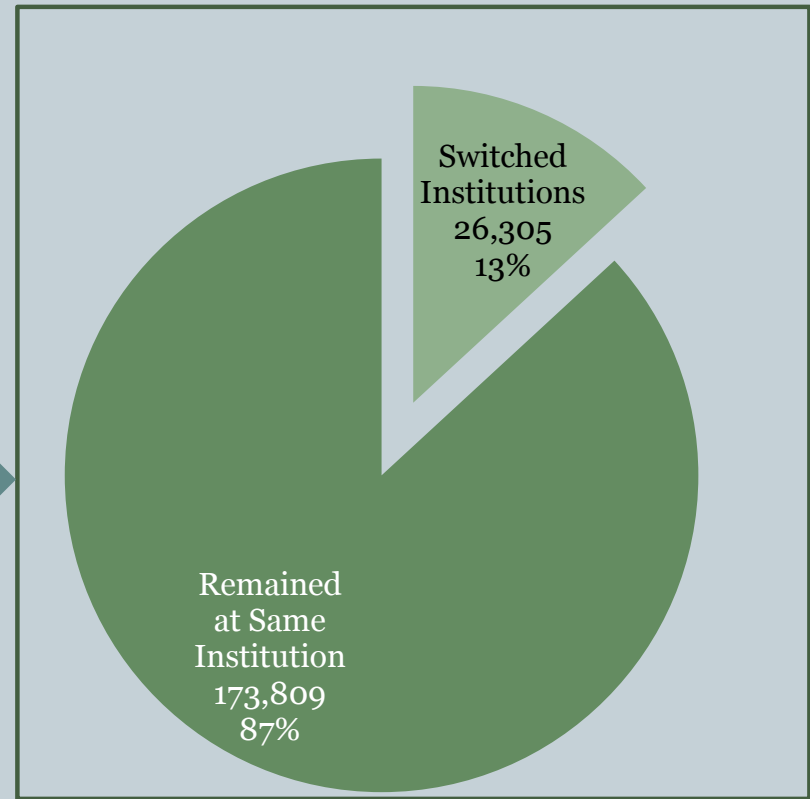
# Student Movers: 2006/07 to 2007/08

37

## 333,083 Post-Secondary Registrants of 2006/07



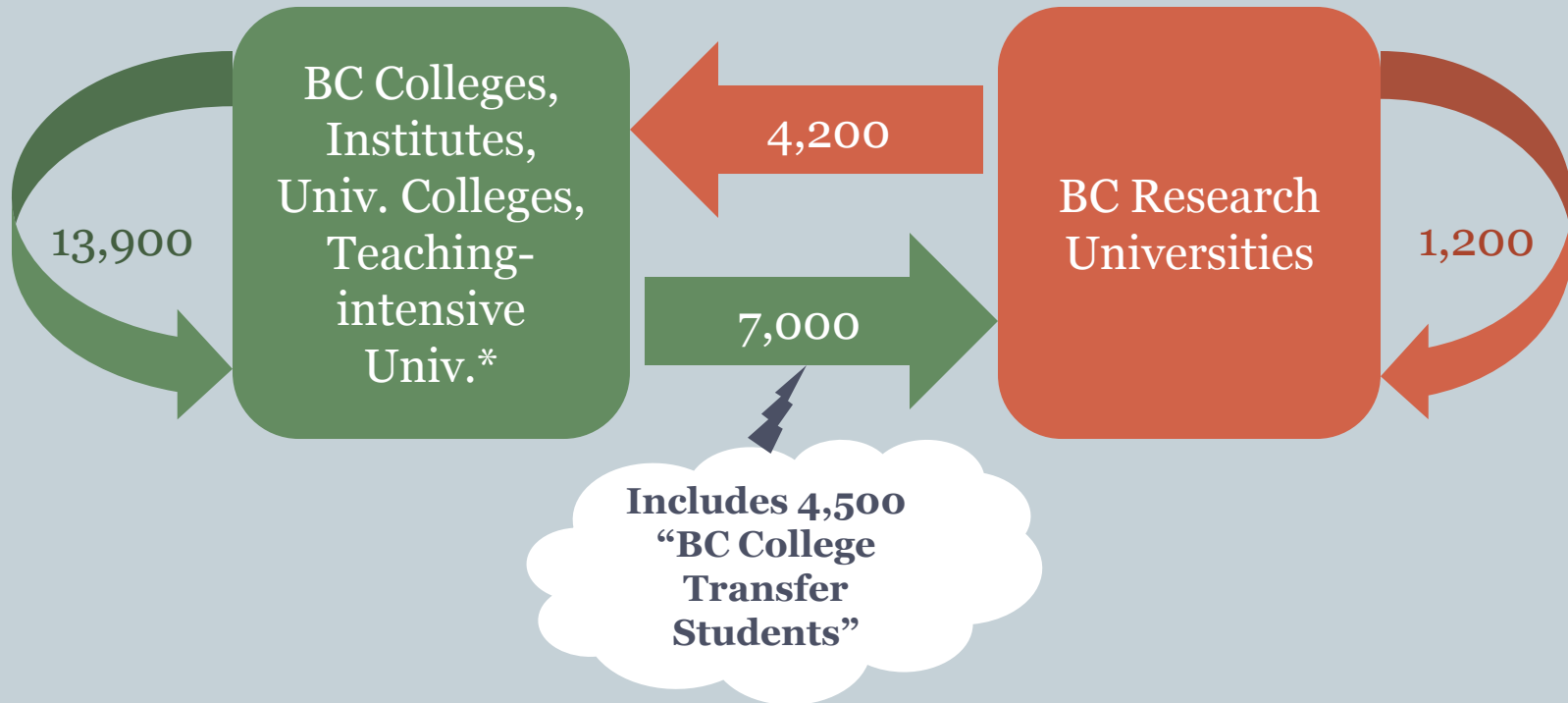
## 200,114 Continuing Registrants in 2007/08



# Student Mobility Between Sectors in the BC Public Post-Secondary Education System

38

- **26,300** students moved between BC public post-secondary institutions, from 2006/07 to 2007/08.

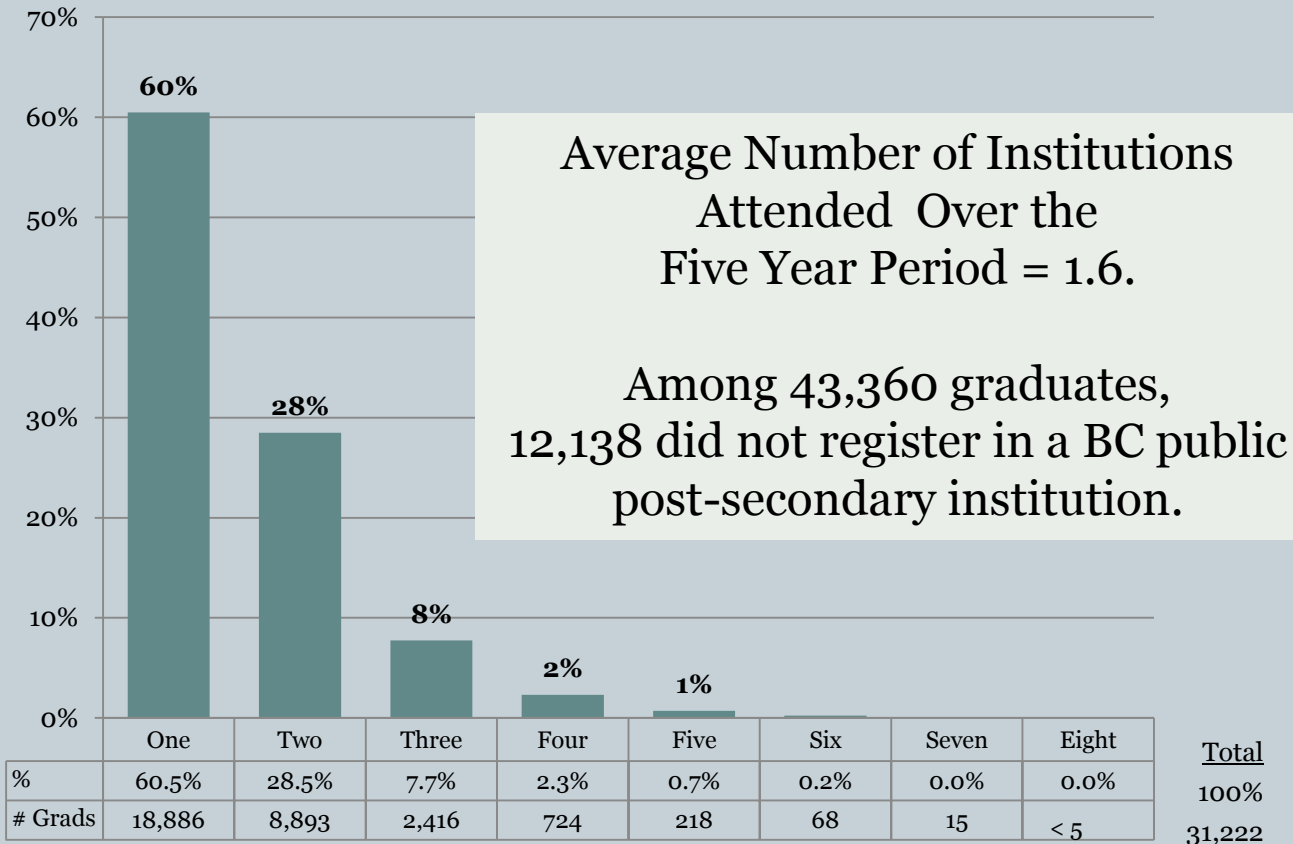


\*Institutional designations in these slides are those that were in place before Fall 2008.

# 2001/02 High School Grads

## Number of Post-Sec Institutions Attended

39



## Lesson #8: The annual volume of mobile students in B.C. far exceeds the volume of transfer students.

40

- Roughly 5,000 students transfer from college to a B.C. research university each year, but ....
- 26,000 students move between B.C. public post-secondary institutions each year.
- BCCAT is working with STP to develop a new research model that accounts for all “movers” and transfer students in the BC public post-sec. system.

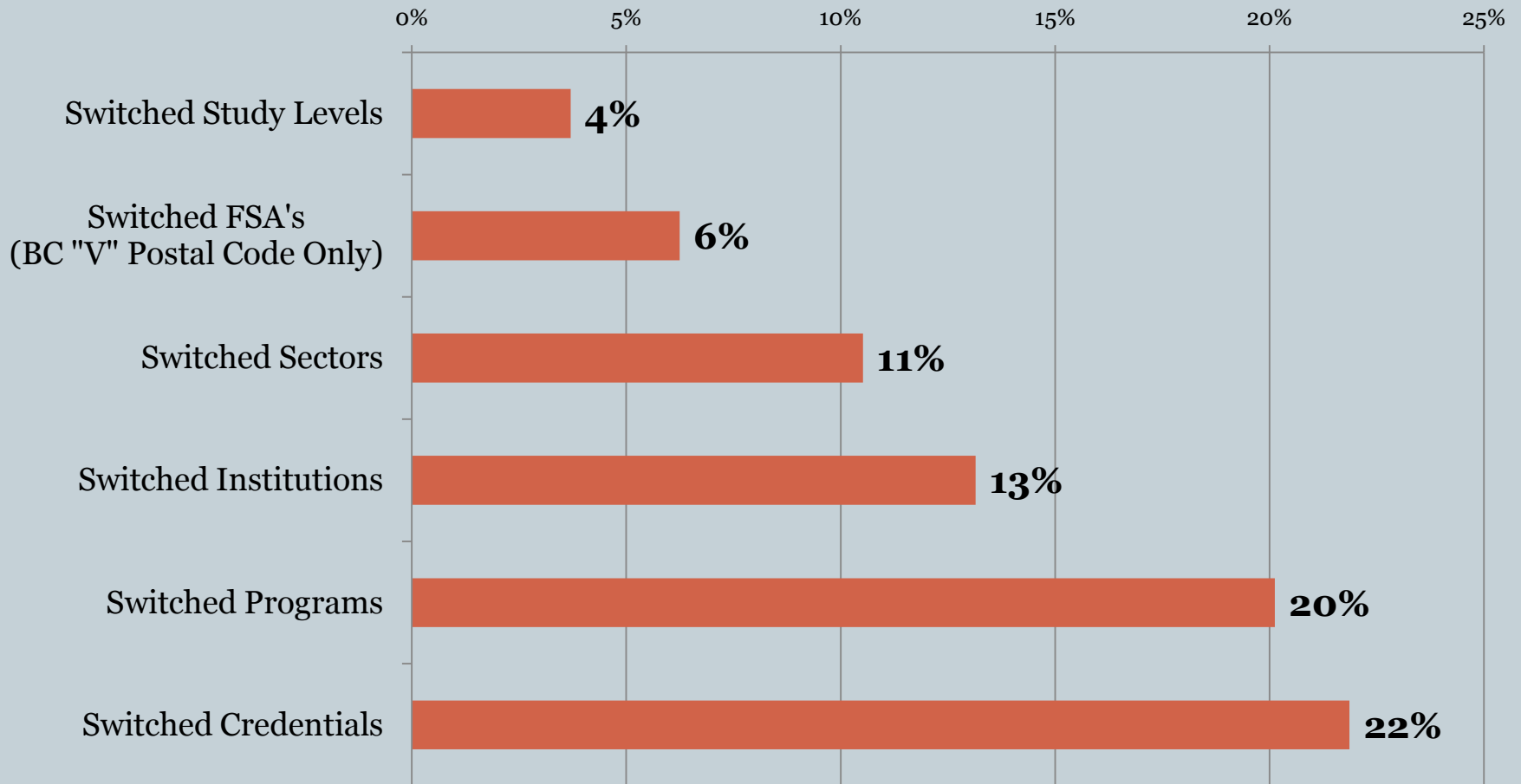
# Research Question #9

41

**What other types of  
student mobility  
does the STP measure?**

# Types of Student Mobility (2006/07 to 2007/08)

42



## Lesson #9:

# Ensure data quality before drawing conclusions.

43

- Some of the movement of students between programs could be artificially created by inconsistencies in program labeling across institutions.
- The STP continually encourages data cleanup and improved consistency across institutions with each year's data submission.

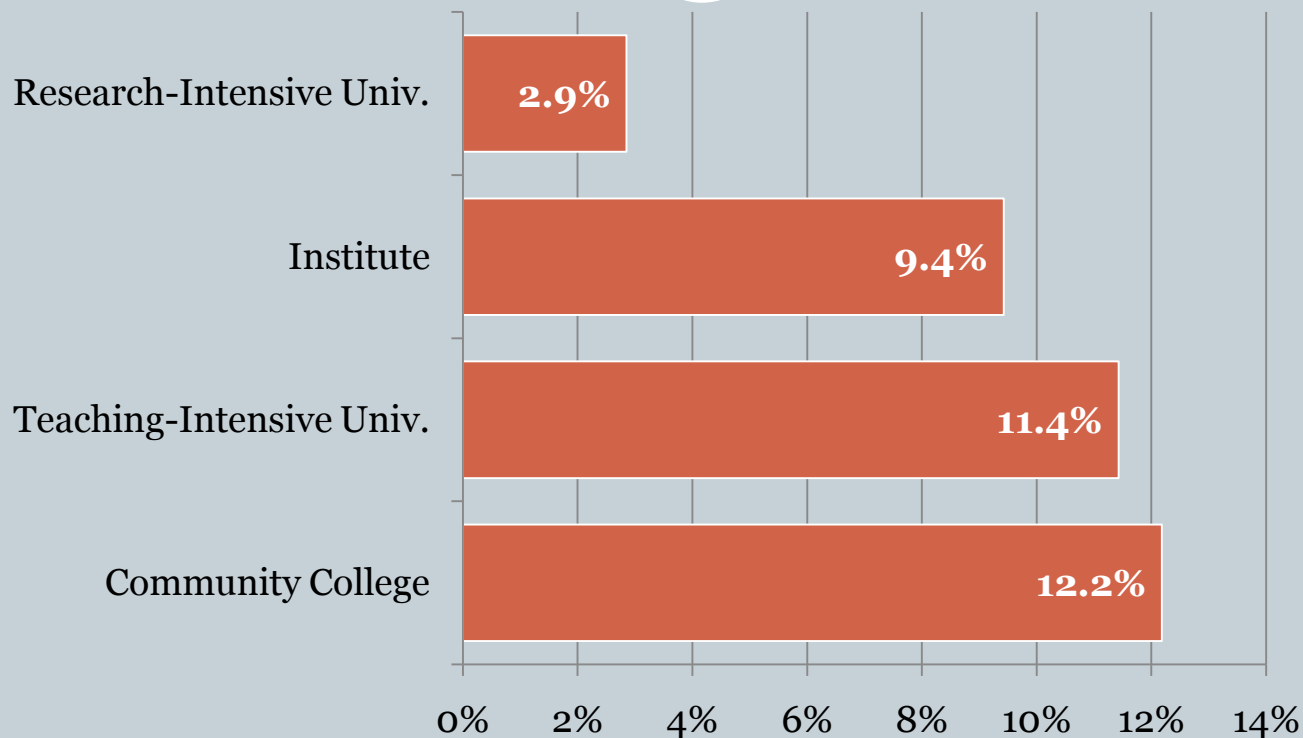
# Research Question #10

44

What are the **drop-out rates** of BC high school graduates who enrolled immediately in post-secondary after high school graduation?

# First Year, Immediate-Entry Dropout Rate from BC Public Post-Secondary Education, by Type of Institution First Attended

45



The **dropout rate** is calculated from the proportion of students who made an immediate entry into BC public post-secondary education in 2004/05 after high school graduation in 2003/04 and did not complete a credential in 2004/05 and did not return to any BC public post-secondary institution at any time over the next four years (2005/06 to 2008/09).

## Lesson #10:

# System-wide data transform institutional perspectives.

46

- Institutional dropout rates do not normally account for students who continue successfully at another institution.
- STP's system-wide data allows us to change our perspective on drop-out rates. It's never as bad as it first appears!

# Conclusion

47

**Secrets of  
Our Success**

# Secrets of Our Success

48

- **Start small**
  - Small steering committee
  - Achievable research agenda
  - Collect minimum dataset to answer research questions
- **Manage the Data and Information**
  - Collect data annually
  - Data sharing agreement
  - Data use policy
  - Data linkage policy
- **Expand incrementally**
  - Add 1 year of data at a time
  - Minimize new data elements
  - Evolving research questions
- **Stability and continuity**
  - Steering committee membership remains stable
  - Consultants replaced by permanent STP Manager
  - Sufficient/ongoing resources are allocated to the project.

# Questions & Comments

49

# Looking for More Information?

50

- **STP Web Site:**
  - [http://www.aved.gov.bc.ca/student\\_transitions/](http://www.aved.gov.bc.ca/student_transitions/)
  - STP Fast Facts
  - Regional Transition Matrices
  - STP Highlights Newsletters
  - STP Research Reports